



<b>To:</b> Steltronic Customers	<b>Date:</b> October 2007
<b>Attn:</b> Software upgrade	<b>From:</b> Jim Osdale
	<b>Re:</b>

This set of instructions is for all customers who have Super Elex lane computers. Please note, there are two different kinds of Super Elex lane computers, we refer to them as Super Elex I and Super Elex II.

When you are running your WINS software at the front desk, please look at the title bar. If you look at the picture below, you will notice the title bar says 6.2.1.



If your system says WINS 6.2.X (Where X = any number), then you have Super Elex II hardware.

If your system says WINS 6.1.X (Where X = any number), then you have Super Elex I hardware.

You will notice on the CD we included an update for both Super Elex I and Super Elex II. When you run the software update below, please use the correct update file.

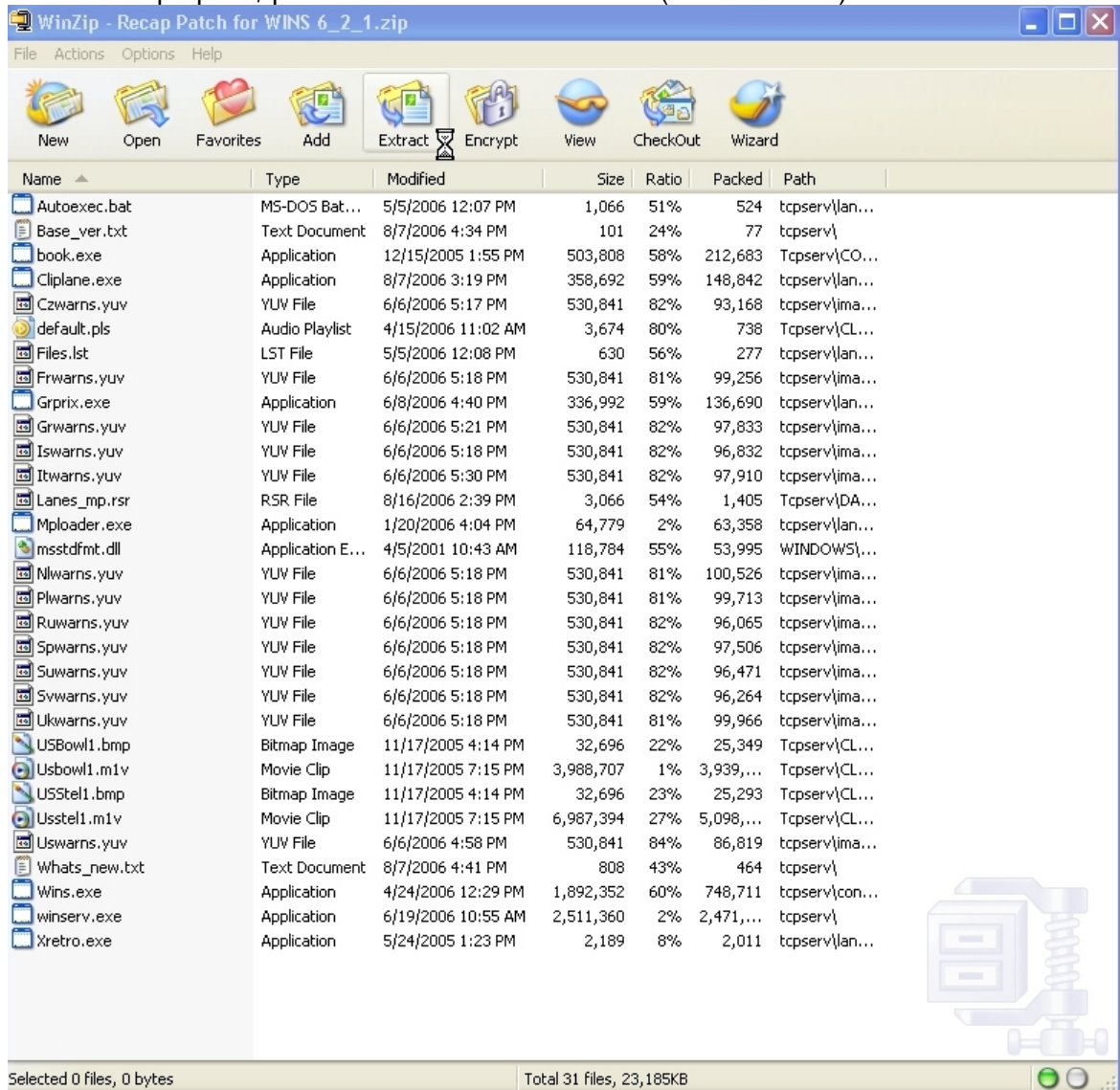
Please be cautious, **YOU MUST RUN THE CORRECT UPDATE** file, otherwise your system will not run properly and you may be forced to install the Steltronic CD and completely start over from scratch.

Please follow all the instructions below very carefully. If you skip or miss a step, this could affect the upgrade, so please be very careful to follow ALL instructions.

1. If you have more than one PC workstation besides your server, please exit WINS on the workstations, and please turn off the PC workstation completely by running Windows Shutdown procedure.
2. On the server, exit the WINS software and select YES to the warning screen.
3. **MAKE SURE YOUR LANE COMPUTERS ARE TURNED OFF (NO POWER)**
4. On the server, please click on the start menu, and then click on CLOSERV. (accept the warning and click YES)
5. Run this software update by double clicking on the ZIP file.

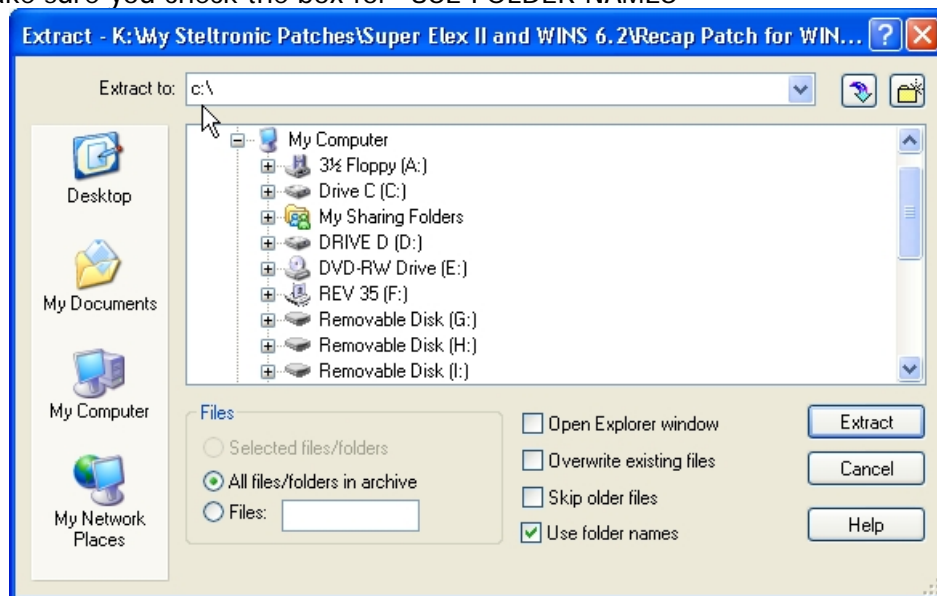
**Remember, please select the correct update file**

6. When WinZip opens, please click the extract button. (Shown Below)



7. On the screen shown below, it is MOST important to extract all files to:

- C:\
- And make sure you check the box for "USE FOLDER NAMES"



8. Turn on the power to the lane computers.
9. Start your WINS software.
10. Make sure Winserv is running in the task bar. Click on the start menu, and then click Winserv to get this program started.

**If you have CRT 28" or 34" monitors**, you will need to make one more modification. If you have 32" or 42" LCD Flat Panel displays, ignore these next steps.

1. Run the Windows explorer. Right Mouse click on the start menu, select explore all users.
2. Find the file on the c drive called: c:\tcpserve\dati\_com\lanes\_mp.rsr
3. Open this file and find the line that says VIDOFFSX=98
4. Place a semi colon in front of this line. By doing this, you are telling the software to IGNORE this line. It should no look like this:  
;VIDOFFSX=98
5. Once you have done this modification, reboot the lane computers.

**If you have Hantarex 32" LCD** Flat Panel displays, make the following changes:  
VIDOFFSX = 98

**If you have the 32" or 42" Steltronic LCD** screens, make the following changes:  
VIDOFFSX = 112

**If you have wireless lane controls**, you will need to make one more modification.

1. Run the Windows explorer. Right Mouse click on the start menu, select explore all users.
2. Find the file on the c drive called: c:\tcpserve\dati\_com\lanes\_mp.rsr
3. Open this file and find the line that says TCWBC = 1
4. Remove the semi colon in front of this line. By doing this, you are telling the software to read this line. It should no look like this:  
TCWBC = 1 and it used to look like this: ;TCWBC = 1
5. Once you have done this modification, reboot the lane computers.

**If you have AMF 82-90 XLi pinsetters**, you will need to make one more modification.

1. Run the Windows explorer. Right Mouse click on the start menu, select explore all users.
2. Find the file on the c drive called: c:\tcpserve\dati\_com\lanes\_mp.rsr
3. Open this file and find the line that says ONWITHPRACTICE = 0
4. Change this line to read: ONWITHPRACTICE = 1
5. Once you have done this modification, reboot the lane computers.

**If you want the recap to show after each game bowled**, you will need to make one more modification.

1. Run the Windows explorer. Right Mouse click on the start menu, select explore all users.
2. Find the file on the c drive called: c:\tcp serv\data\_com\lanes\_mp.rsr
3. Open this file and find the line that says RECAP = 0
4. Change this line to read: RECAP = 1
5. Once you have done this modification, reboot the lane computers.

You should now be complete with the new software. If you have any questions, please feel free to call us.

Sincerely,

A handwritten signature in black ink, appearing to read "Jim Osdale".

Jim Osdale  
US Steltronic, LLC