



<b>To: Steltronic Customer</b>	<b>Date: June 14, 2011</b>
<b>Attn:</b>	<b>From: Jim Osdale</b>
	<b>Re: Workstation Shorcuts</b>

Urgent     For Review     Please Comment     Please Reply

Dear Steltronic Customer,

If you receive an error that says "The referring server address is not 192.168.127.1", the most likely cause is your shortcut that you are double clicking is incorrect. If you right click on this icon, select properties. The "Target" or "start in" section should NOT be:

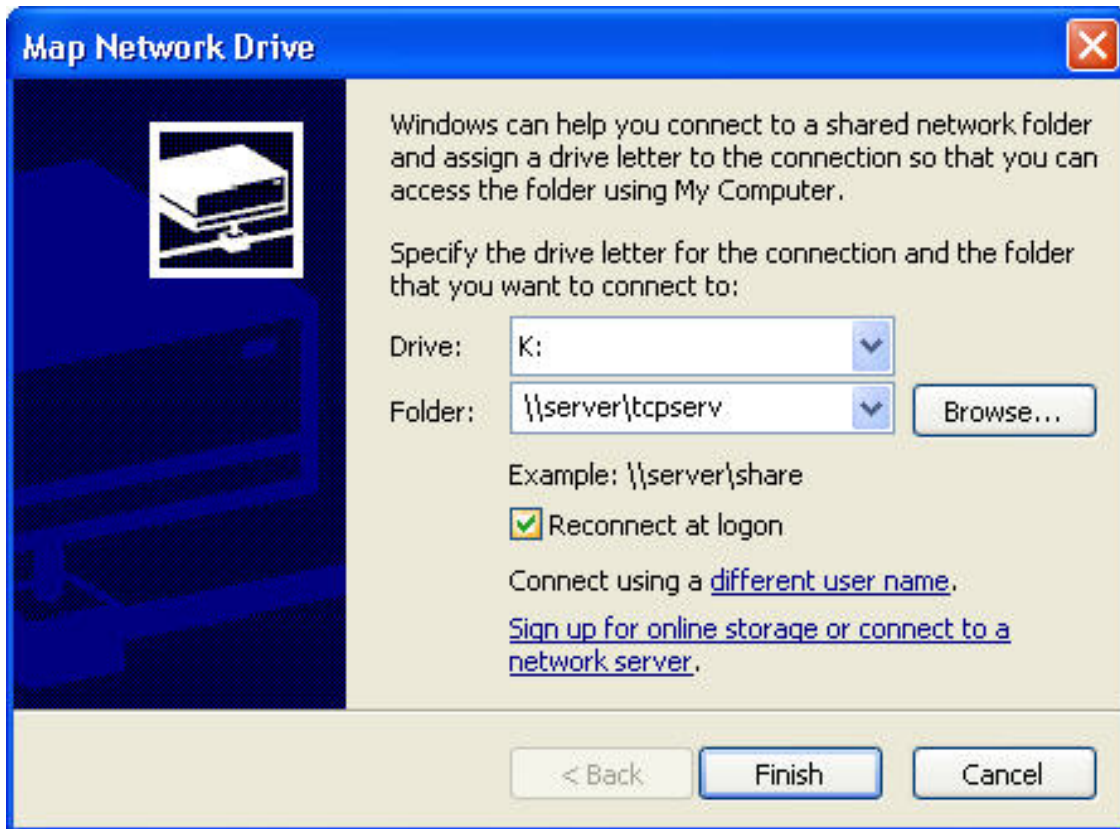
`\\server\tcpserv\consexex\wins.exe us 2`

However it should read something like this:

**`K:\consexex\wins.exe us 2` (This is the correct shortcut)**

When you open "my computer", you must be able to double click on drive K and it should open a folder. If you run into any errors, it may be possibly corrected by rebooting the server and this workstation. If this does not work, you may have to "disconnect" this mapped drive and build it again.

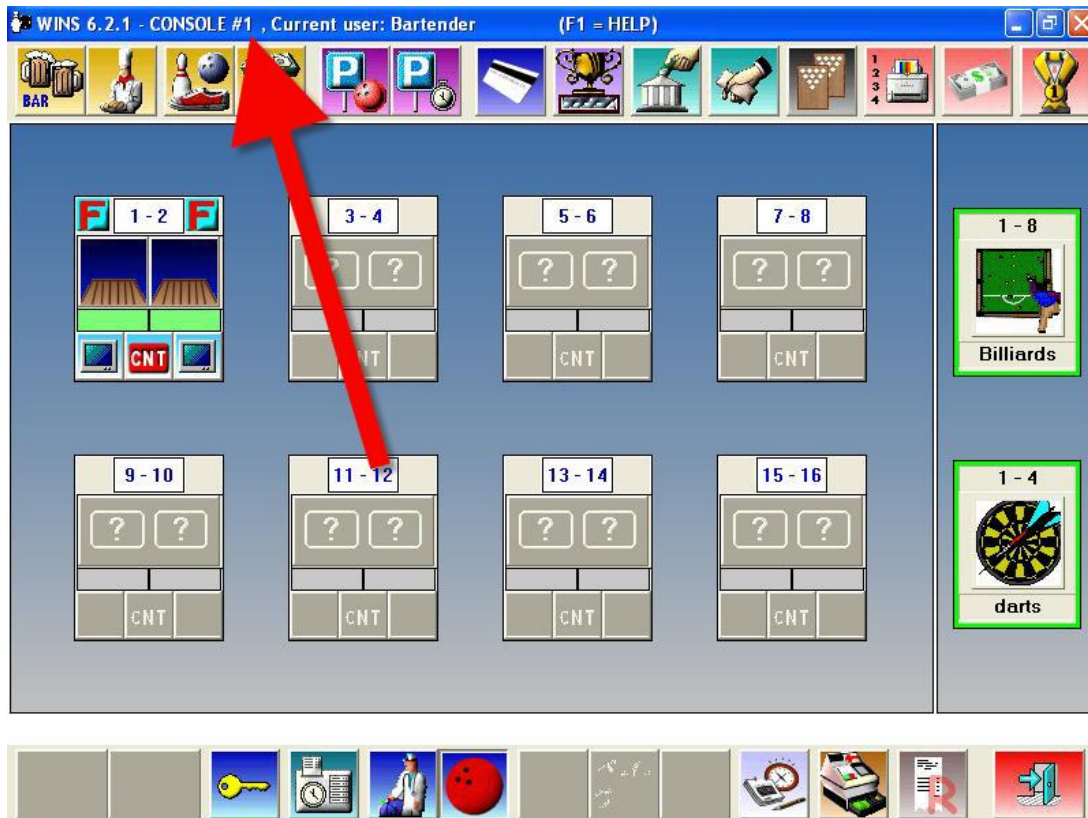
To map a hard drive, follow these instructions:



- A. Right mouse click on the start button in Windows, then select "Explore All Users"
- B. In the menu, click the tools menu, then select "map network drive"
- C. For the drive letter, select K
- D. For the folder, type this line: \\server\tcpserv
- E. Click the finish button. If Windows opens this new folder, you can close it as this is confirmation you mapped the drive properly. If the folder does not open or you receive an error from Windows, your network connection has been damaged and needs to be corrected.

If you need to make this workstation another number such as #3, follow the instructions below. The Steltronic system cannot and will not allow two separate PC's to run the same ID number of the workstation software.

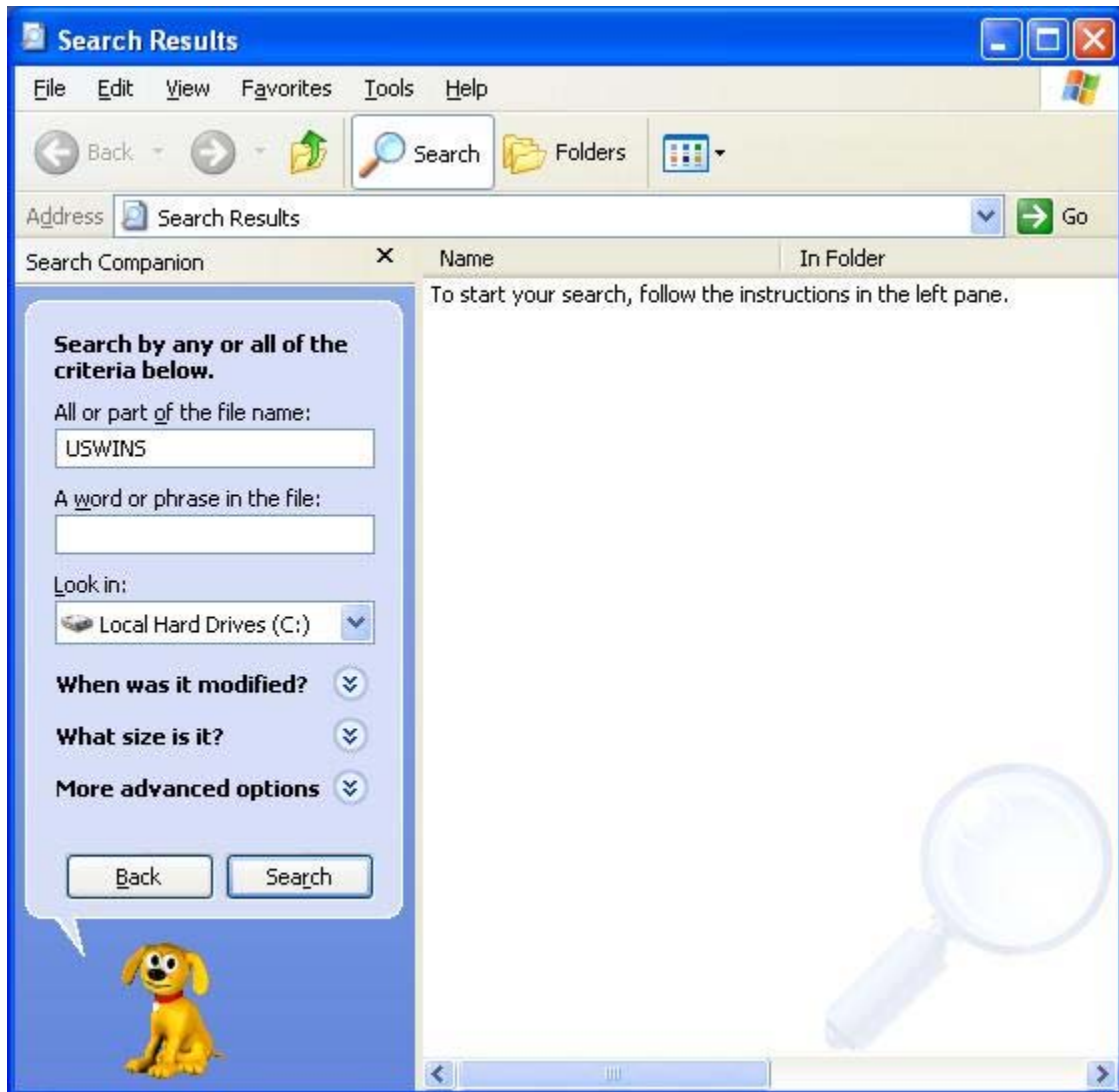
If you look at the title bar of your other workstations, you will see the number of the workstation.



Your server PC will always be #1, and each workstation in the building will have a different number, 2, 3, 4...

**(You must have an active drive K for this to work properly)**

- A. Click on the start button, then select search.
- B. Search for files or folders.
- C. Search for a file called USWINS and make sure you search the entire local hard drives C



- a. When you find all the USWINS shortcuts, right mouse click on each shortcut found and select properties, then in the target window, change the last number to be your workstation number.

b. If you want this PC to be workstation #2, the target needs to be:  
k:\consexewins.exe US 2

c. Otherwise, change the very last number to your desired workstation



One more shortcut to change, please do these steps again for another file called Desk Configuration. After your search is complete, change the properties of this file so that your last number in this target is the same number as your workstation number.

Sincerely,

A handwritten signature in black ink that reads "Jim Osdale".

Jim Osdale  
Steltronic Inc.